

MONTHLY MEMBERSHIP PROGRESS REPORT

LOCATION WEST VIRGINIA

District 29 L

Results as of: 6/30/2022

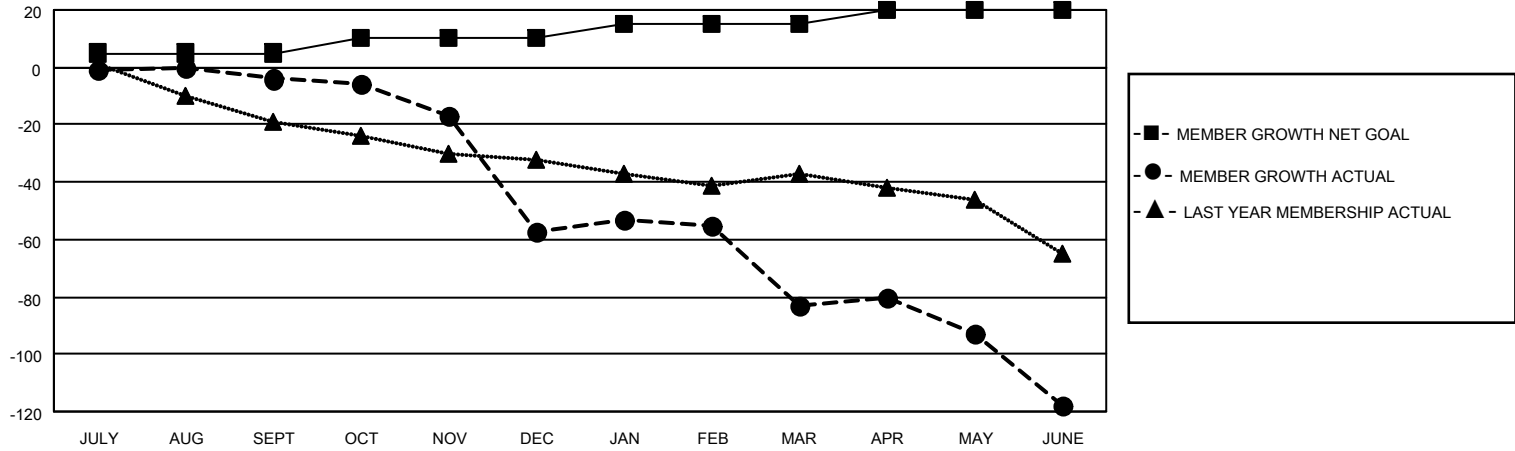
Clubs			
RESULTS FOR 2021-2022			
QUARTER	NEW CLUB GOAL	NEW CLUBS	DROPPED CLUBS
JULY/AUG/SEPT	0	0	0
OCT/NOV/DEC	1	0	1
JAN/FEB/MAR	0	0	1
APR/MAY/JUNE	0	0	2

Members			
RESULTS FOR 2021-2022			
QUARTER	MEMBER GROWTH NET GOAL	MEMBER GROWTH ACTUAL	DROPPED MEMBERS ACTUAL (including transfers)
JULY/AUG/SEPT	5	14	18
OCT/NOV/DEC	5	15	68
JAN/FEB/MAR	5	19	43
APR/MAY/JUNE	5	42	64

GOALS AND ACTUAL NEW CLUBS CUMULATIVE



GOALS AND ACTUAL MEMBERS CUMULATIVE



DROPPED CLUBS: 4	
<u>DROPPED MEMBERS</u>	
DECEASED	30
CLUB CANCELLED	0
OTHER	163
TOTAL	193

31 CLUBS OF 53 ADDED 1 OR MORE NEW MEMBERS

[CLICK HERE FOR CUMULATIVE MEMBERSHIP DATA](#)

<u>GENDER DISTRIBUTION</u>	
MALE	645 (62.08%)
FEMALE	394 (37.92%)
NON BINARY	0 (0.00%)
PREFER NOT TO ANSWER	0 (0.00%)
TOTAL FAMILY UNIT MEMBERS	302
FAMILY MEMBERS PAYING HALF DUES	157